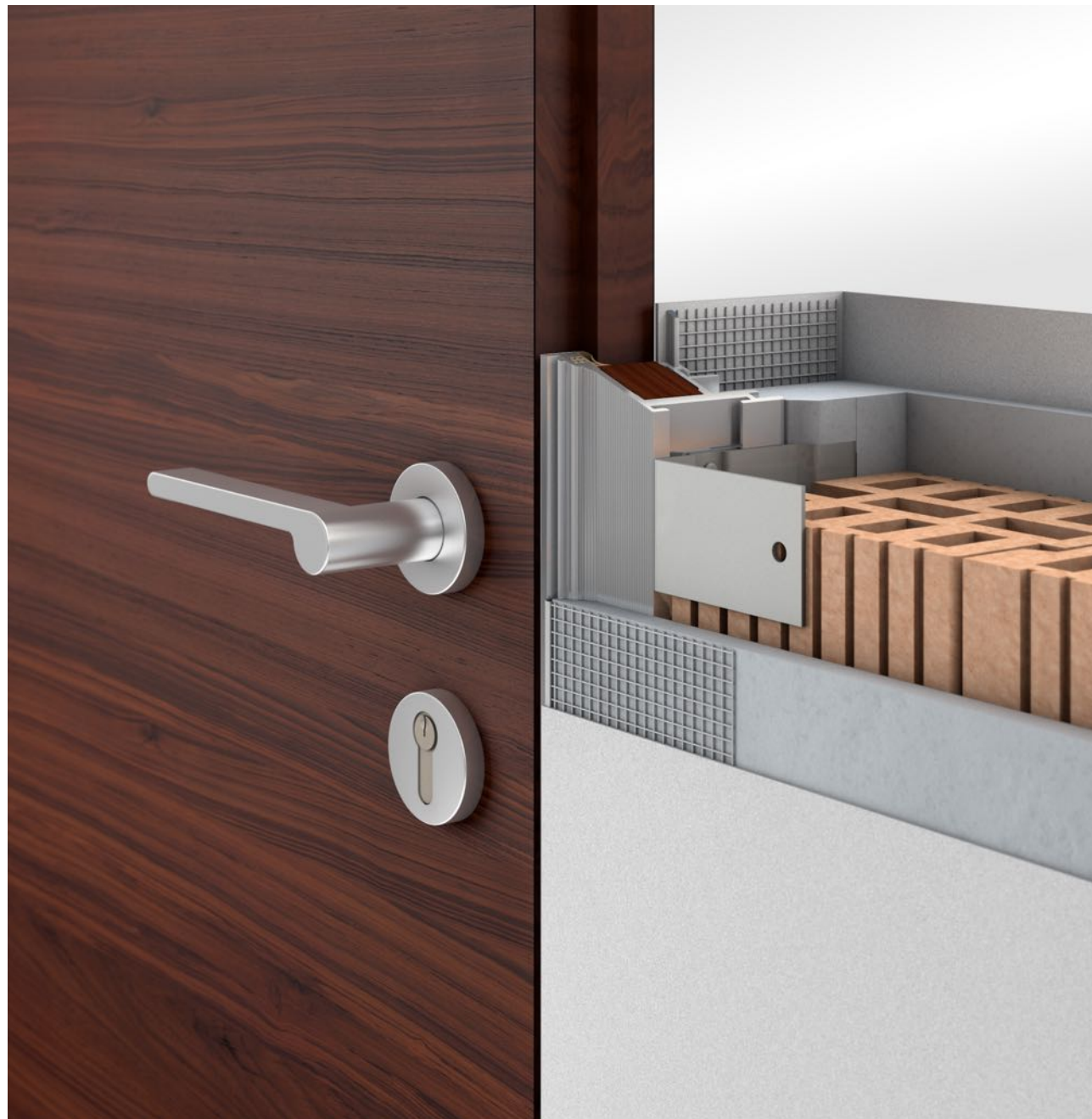
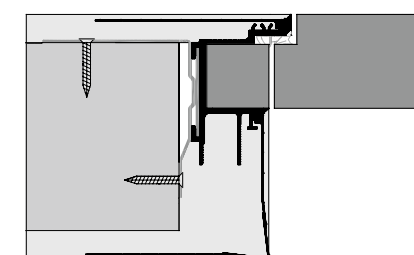


FLUSH WALL DOORS

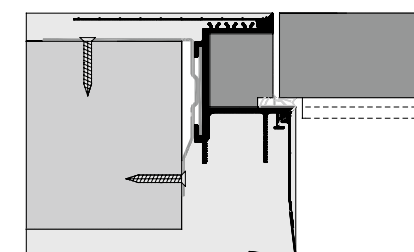
Suppose interior doors made of wood are integrated into their surroundings (wall, room) aesthetically. In that case, a flush door with skirting boards flush with the wall is the perfect solution. Forest Bright produces wooden doors flush with the wall, with the AGS door frame profile, so that the door frame is neither visible from the inside nor from the outside, which becomes the ultimate result of pursuit simplicity.

The AGS door frame system has the advantage that it does not depend on the preparatory work of the plasterer when installing the door on the building site. Its patented embedded mesh technology ensures that the door frame and the wall are bonded tightly and not easy to crack.





Invisible TUS50 frame, In-swing,
Door thickness: 50mm



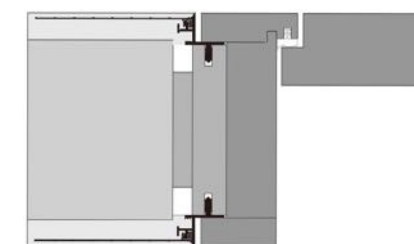
Invisible TUT45 frame, Out-swing,
Door thickness: 45mm

Flush wall door with concealed frame
and flush wall skirting. Primer door or
factory pre-finished door



Flush Wall Door, concealed frame, door panel in gray oak finish



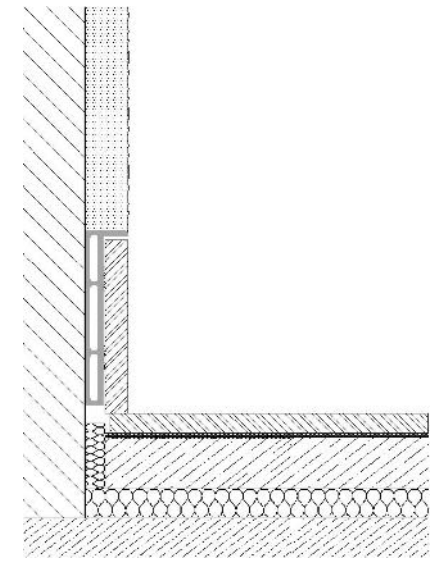


TL profile with wooden frame

Flush wall door paint grade with
shadow gap profile system
combined with flush wall skirting

Flush wall door, natural oak, with shadow gap
profile system Combine with flush wall skirting





Flush wall skirting system



STANDARD VENEER STAINED COLOURS



Ice oak

Light ice oak

Clay gray oak



Light clay gray oak

Natural oak

Walnut oak

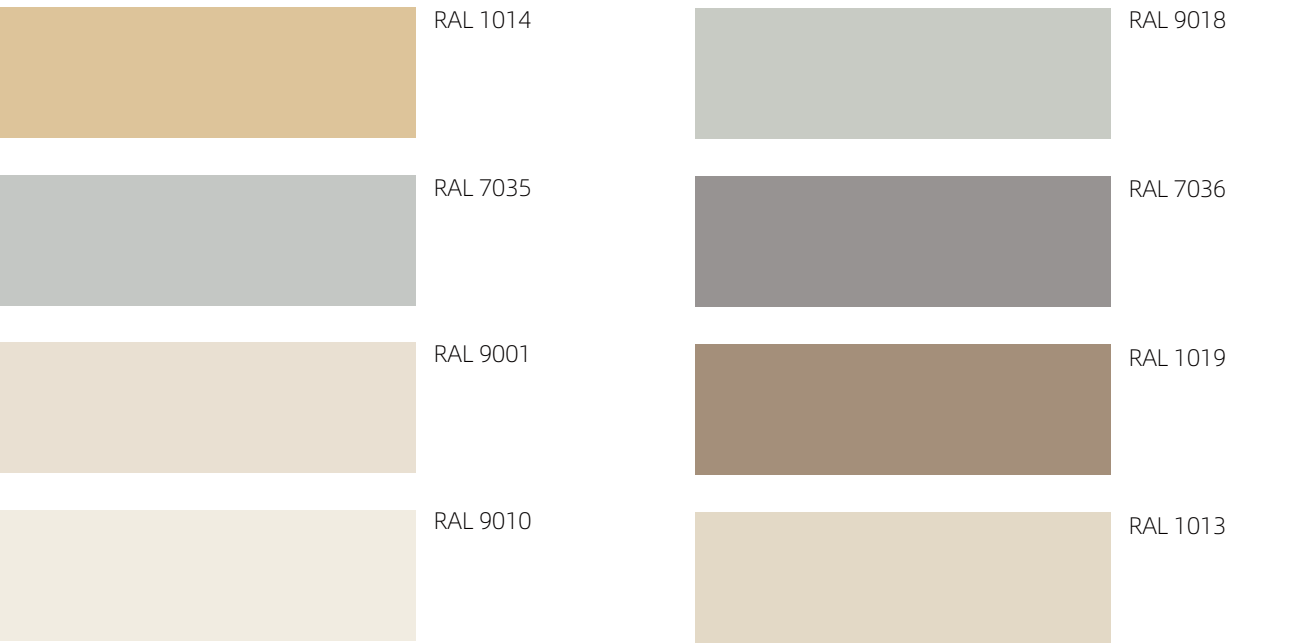


Black oak

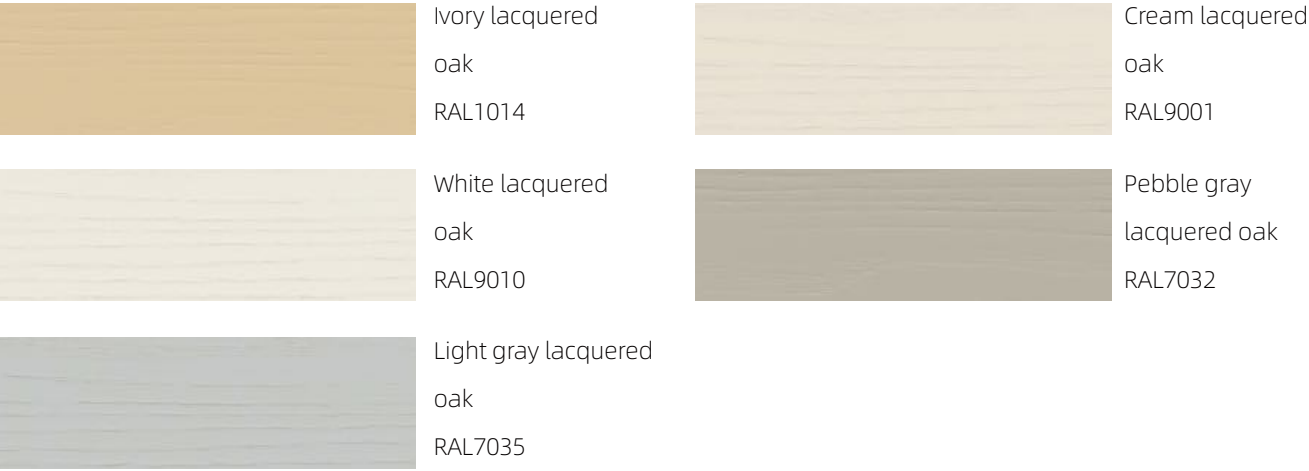
Wenge oak

Dark wenge oak

STANDARD MATT AND GLOSSY PAINT

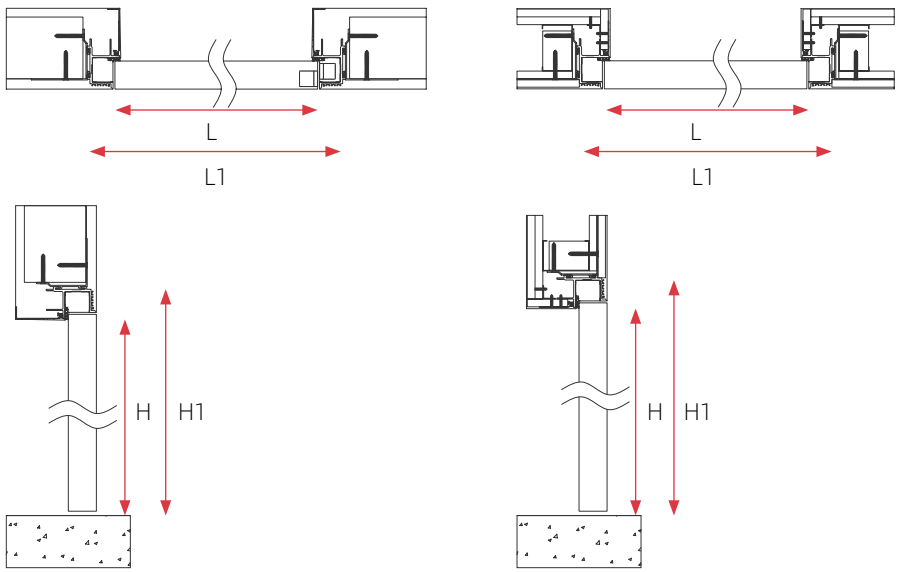
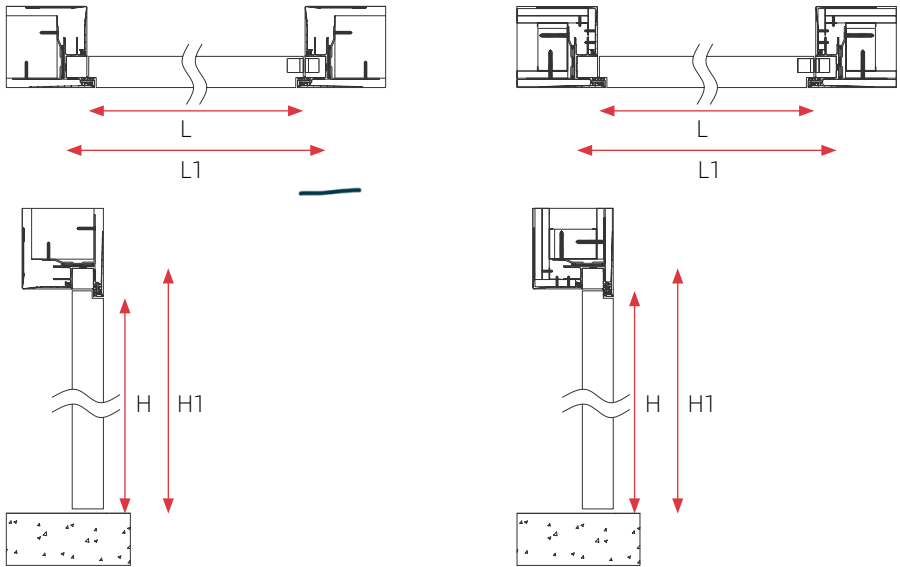


STANDARD OPEN GRAIN LAQUERED COLOURS



TECHNICAL DRAWINGS

- Door panel in aluminum honeycomb core, 50mm door thickness
- Door finishing: primer or pre-finished as request, or stain veneered.
- Unique aluminum frame with solid wood inserted for easy machining
- Snap-in mesh to avoid cracking between frame and wall.
- 3D adjustable concealed hinges, magnetic lock set.



Masonry Wall

Dry Wall

Push Opening

L - finished opening width
600-900mm. 24" -36"
H - finished opening height
Max 3000mm, 118 - 1/4"
L1 - rough opening width
L + 120mm
H1 - rough opening height
H + 60mm

Pull Opening

L - finished opening width
600-900mm. 24" -36"
H - finished opening height
Max 3000mm, 118 - 1/4"
L1 - rough opening width
L + 120mm
H1 - rough opening height
H + 60mm

